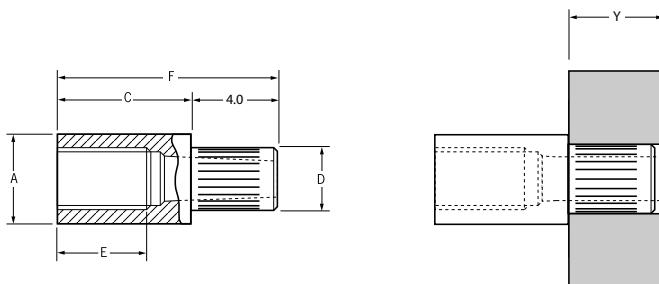

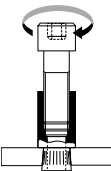




English	Français	Deutsch	Italiano	Español
Long spigot	Pion long	Langer Schaft	Piedino lungo	Espiga larga
Brass*	Laiton*	Kupfer-Zink Legierung*	Ottone*	Latón*
Tin plated**	Etamè **	verzinkt**	Stagnato**	Estañado**

\*: CuZn38Pb1.5 (ROHS conform)  
 \*\*: ROHS conform



Ø	Y				A	C	D	E	F		Fasteners per pod/ Nombre de rivets par chargeur/ Niete pro Magazin/ Rivetti per carica- tore / Uds./carga	Part No/ref
	nom.	min.	max.	min.	max.	max.	± 0.1	max.	min.	± 0.2	Nm max. <sup>1)</sup>	
M2.5 x 0.45	0.8	2.4	2.70	2.80	4.05	5.5	2.69	3.4	9.5	0.96	30	01118-06555
						6.0		3.9	10.0		29	01118-06560
						7.0		4.9	11.0		26	01118-06570
						8.0		5.9	12.0		24	01118-06580
						9.0		5.9	13.0		22	01118-06590
M3 x 0.5	0.8	2.4	3.30	3.40	4.85	5.5	3.28	3.4	9.5	1.52	30	01118-07055
						6.0		3.9	10.0		29	01118-07060
						7.0		4.9	11.0		26	01118-07070
						8.0		5.9	12.0		24	01118-07080
						9.0		5.9	13.0		22	01118-07090

all dimensions in mm / en millimètres / alle Maße in mm / in millimetri / en milímetros

1) As tested in 1.5 mm thick glass fibre reinforced board to specification NEMA-L11-1971 Type FR4.

Testé dans circuit imprimé fibre / époxy 15/10 selon NEMA-L11-1971 type FR4.

Getestet in 1,5 mm starker glasfaserverstärkter Leiterplatte nach Spezifikation NEMA-L11-1971 Typ FR4.

Testato in un circuito rinforzato con fibra di vetro di 1,5 mm come da specifica NEMA-L11-1971 tipo FR4.

Testado en una tarjeta reforzada con fibra de vidrio de 1,5 mm.



An Acument™ Global Technologies Company

www.avdel-global.com

© 2007 Acument Intellectual Properties, LLC

Avsert® is a trademark of Avdel UK Limited

05.2007

Data shown is subject to change without prior notice as a result of continuous product development and improvement policy.  
 Your local Avdel representative is at your disposal should you need to confirm latest information.