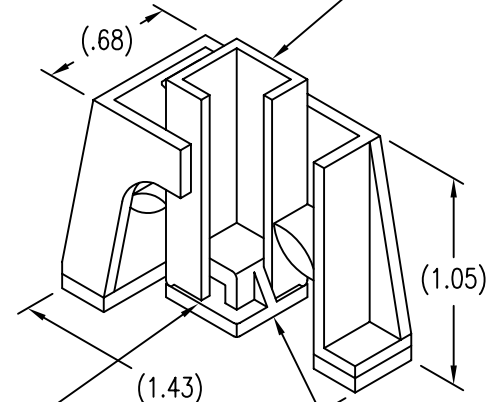
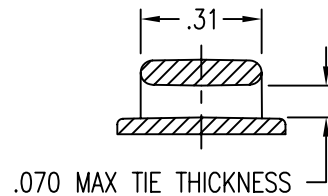
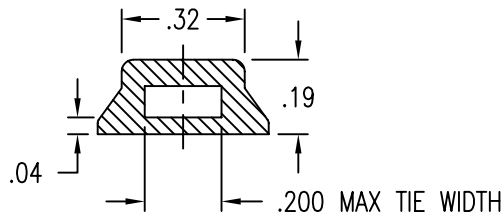


DISPOSABLE PRESSURE SENSITIVE
ADHESIVE FIXTURE HOLDS MOUNT
WHILE ADHESIVE CURES.



CABLE TIE OPENING

MOUNT ATTACHED BY ADHESIVE
APPLIED TO THIS SURFACE.



MATERIAL DATA

CODE	MATERIAL	FINISH
V	GLASS/POLYETHERIMIDE	ABRASIVE CLEAN
VC	CARBON/POLYETHERIMIDE	ABRASIVE CLEAN

EXAMPLE PART NUMBER

CB9302 V 3

REFERENCE SIZE
MATERIAL - GLASS/POLYETHERIMIDE
BASIC PART NUMBER

UNLESS OTHERWISE SPECIFIED, ALL DIMENSIONS ARE
IN INCHES AND TOLERANCES ARE AS SHOWN BELOW.
DIMENSIONAL TOLERANCES AND SYMBOLS PER ANSI
Y14.5M-1982.

PROPRIETARY PARTS SHOWN IN THIS DRAWING ARE THE SUBJECT
OF ISSUED UNITED STATES AND FOREIGN PATENTS AND PATENTS
PENDING.
UNAUTHORIZED REPRODUCTION AND/OR DISTRIBUTION OF THIS
DRAWING IS SPECIFICALLY PROHIBITED.

CLICK BOND

CARSON CITY
NEVADA 89706

		APPROVALS	DATE
ANGLES	±1°	DRAWN BPEREZ	9DEC03
.XX	±.03	CHECKED DOC	9DEC03
.XXX	±.010	RELEASED CGH	12DEC03
.XXXX	±.001	REVISED BPEREZ	9DEC03

TITLE			
MOUNT, CABLE TIE ANCHOR, SIZE 3			
SIZE	CAGE CODE	DWG. NO.	REV.
A	66530	CB9302	4
SCALE	2/1	9DEC03	SHEET 1 OF 1